

Pre-application Consultation Report

# Beinneun 2 Wind Farm Invergarry



On behalf of **Beinneun 2**  
July 2025



## Contents

1. Introduction
2. The proposals
3. Our consultation process
4. Responses received
5. Our response
6. Appendices



Click these headlines to move to different parts of this document

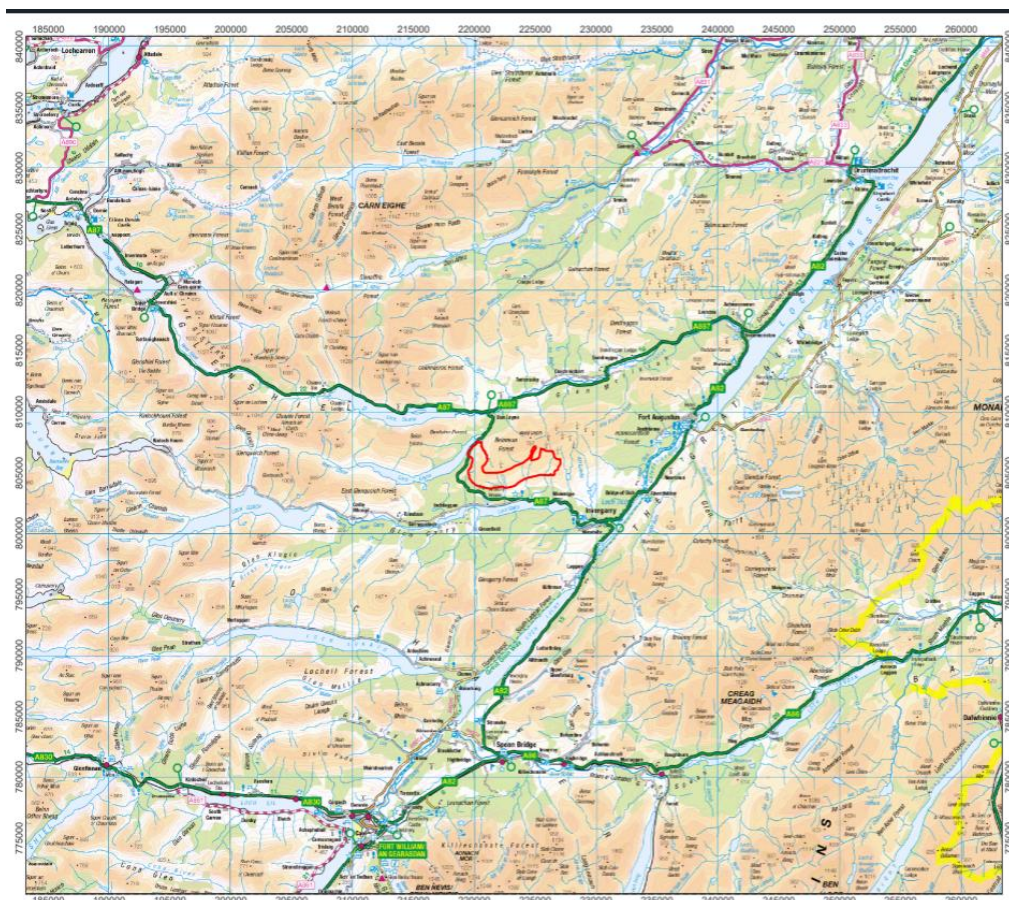
- **Adjacent to the existing Beinneun Wind Farm in the Highland Council area.**
- **Up to 19 new turbines**
- **A Battery Energy Storage System**
- **An additional 136.8 MW, or 7.2 MW per turbine, of wind-generated electricity to be generated and fed into the grid.**

## 1. Introduction

Beinneun 2 Limited is proposing the Beinneun 2 Windfarm, to be situated immediately south of the existing Beinneun Windfarm, northwest of Invergarry.

This document is known as a Statement of Community Involvement. It supports a Section 36 application under the Electricity Act (1989) for this project and has been compiled by specialist community consultation group Your Shout, part of Thorncliffe Communications Ltd. This report shows the public consultation we have carried out to inform the evolution of the proposals.

The site is approximately five kilometres northwest of Invergarry and directly adjacent to the existing Beinneun Wind Farm in the Highland Council area. The wind farm presently has 34 turbines and the proposal is to install up to 19 new turbines in order to generate 136.8 MW or 7.2 W per turbine.



The aims of the pre-application stage of public consultation are:

- To let local residents, businesses, councillors and other stakeholders know about the ideas for redevelopment on the site.
- To understand local views, engage with the community, help identify concerns and opportunities, and feed these into the evolving proposals.
- To show how we have responded to the issues of the community and stakeholders, and how changes have been made to the proposals.
- To pledge our continuing commitment to engagement throughout the statutory consultation period and beyond.
- We adhere to the accepted Consultation Principles. Some of these principles are:
  - Using plain English and avoiding jargon. Making the whole process clear and concise.
  - Using the right tools, whether digital, collaborative, informative or ongoing. Only asking questions where we do not have a final view.
  - Ensuring the affected people, groups and businesses are aware, targeted, and allowed proper time to respond. Making sure each group can access and respond to the consultation, however and using whatever means they engage with us.
- Early pre-application engagement and front-loading, where early engagement has significant potential to improve the efficiency and effectiveness of the process for all parties. We recognise that the more issues can be resolved at pre-application stage, the greater the benefits.
- Analysing and responding objectively and properly to consultations, published in writing and online through this document, and by direct contact if possible. Responses will be published where possible, with due regard to GDPR regulations.

## 2. The process

Our application is a Section 36 application under the Electricity Act. However we are mirroring the spirit of the prescribed PAC process, even though we are not legally bound to follow this process.

Our consultation process is above all accessible, participatory and transparent, and abides by best practice consultation.

Here is the PAC process, as defined by the Scottish Government and our response to that process.

- A minimum of two public events must be held for members of the public to make comments to the prospective applicant on their proposals before the proposal is finalised.
- A minimum of 14 days between the first and final event needs to be considered.
- The prospective applicant must at the final public event provide feedback to members of the public in respect of comments received by the prospective applicant as regards the proposed development.

We held three public events where the public were invited to view the proposals, make comments or ask questions to the developer. Prior to these public events, the team had held three meetings with local groups as follows:

- 14<sup>th</sup> November 2023 the team met with Invergarry Community Council to discuss early stage proposals for Beinneun 2. This meeting coincided with the issue of the Scoping Report (13<sup>th</sup> November 2023), so allowed the community to ask any initial questions and share contact details.
- 15<sup>th</sup> November 2023 the team met with Fort Augustus Community Group to discuss Beinneun 2. This was to give a public face to the Scoping Report, share contact details and answer any questions.
- 15<sup>th</sup> November 2023 the team met with Glengarry Forest Trust to discuss Beinneun 2 proposal, and potential for local investment in the scheme.

The first two public events were drop-in sessions, held on Monday 24 March 2.30pm to 6.30pm at Glenmoriston Millennium Hall, Invermoriston IV63 7YA, and Tuesday 25 March 2.30pm to 6.30pm at Glengarry Community Hall, Invergarry PH35 4HG. We had display boards, all shown in the appendix.

Team members were on hand to answer questions from residents.

We estimate that nine residents came to the first event (including six who were attending the art class held at the same time in the building) and eight for the second event.

Our third event was an online event, using the communityUK online platform. It was held on Tuesday 29 April.

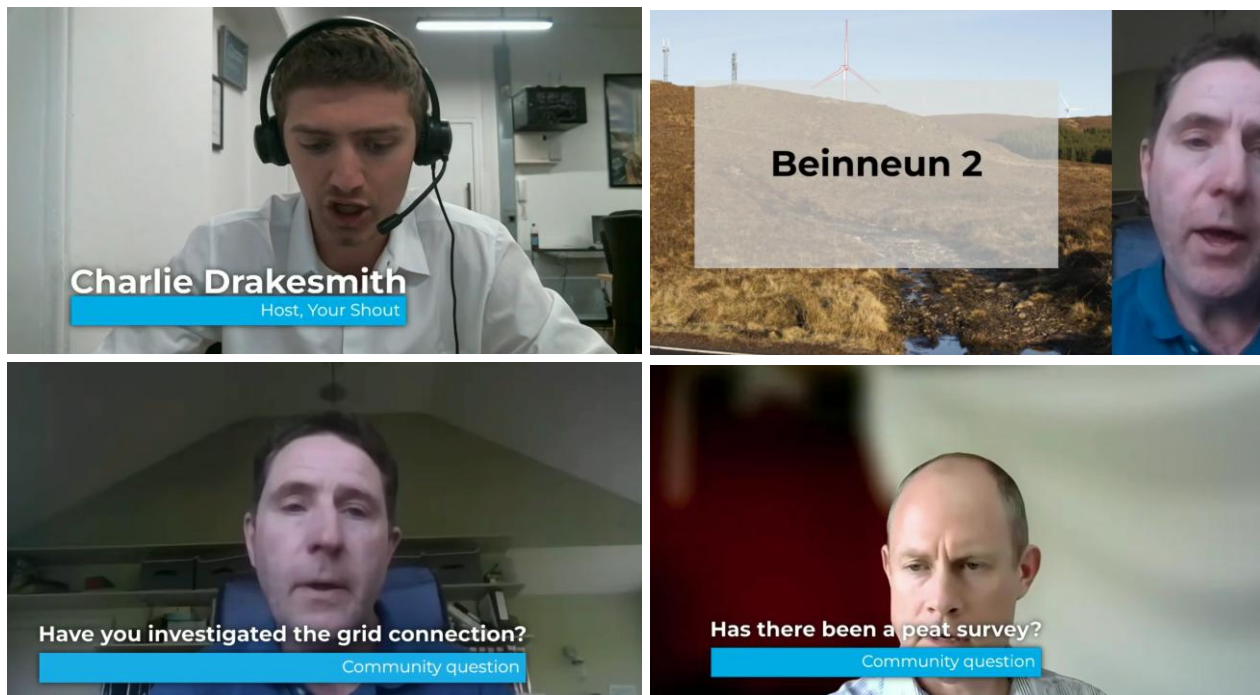
This event included feedback to members of the public in respect of comments received from the first two events.

CommunityUK is a highly accessible and participatory consultation platform used by local authorities, public bodies and the private sector alike. It prides itself on attracting more participation than in-person public events, and audiences find the experience more enlightening and easy to navigate. Any person not able to access the online event, through age or other, is contacted on a one-to-one basis by the developer team.

Five people registered in advance for this communityUK event, and 20 people participated either live or watching the archived recording. The event is recorded online at <https://beinneun2.communityuk.site/watchit>

The website included a survey for residents to share their view. This survey was open until 9 May.

Screenshots of the event are shown overleaf:



- Undertake a letter drop to all properties within vicinity of the site to provide information on the proposed development, raise awareness of the virtual event, and provide an opportunity for feedback on the proposal. For the letter drop we recommend all properties within 10km of the site where there will be theoretical visibility of the wind farm.

We did two letter drops. The first letter was delivered to 285 properties on 13 March 2025 using Royal Mail 1<sup>st</sup> class delivery, in advance of the first two events.

A second delivery to 285 properties was done on 17 April 2025, again using Royal Mail 1<sup>st</sup> Class delivery, in advance of the third event.

The area of distribution is shown overleaf. It represents an area of 12km around the site. The letters can be seen in the Appendix section.

# Beinneun 2 Wind Farm

## Pre-application Consultation Statement



- The information which the public can obtain requires to be available electronically as well as in physical format. The current list of content of a newspaper notice will require that prospective applicants to indicate how (including by electronic means) information can be obtained on the proposals.

- Provision of a website hosting all of the information which would be available to members of the public in an "in-person" engagement event. The applicant should also provide a website hosting all of the information which would be available to members of the public in an "in-person" engagement event.

Our project website is at <https://beinneun2.communityuk.site/>, which was available throughout the consultation and will be available throughout the application.

The website was advertised on the letters, at the events and on the advert. A QR code and short URL was also given.

Here is a screenshot of the homepage of the project website. Other pages are in the appendix.

The material on display at the drop-in events is in the appendix.



- Newspaper notice to be published in advance of the first and second event in a local newspaper circulating in the locality in which the proposed development is situated at least 7 days of this event.

The advertising requirements are as follows:

- A description of the proposed development
- Details as to where further information may be obtained concerning the proposed development
- The date and place of the public event
- A statement explaining how and by when persons wishing to make comments may do so
- A statement that comments made to the prospective applicant are not representations to the Council and if the prospective applicant submits a planning application there will be an opportunity to make representations on that application to the Council

We promoted the drop-in consultation events in the local media, by a public notice printed in the Press and Journal Inverness newspaper. A copy of this notice can be found in the Appendix.

For the third event, we sent reminder emails to all participants who had registered to participate in the consultation so far, as well as sending the letters. An example of the email can be found in the Appendix.

The reporting requirements are as follows.

- Report on consultation:
- Dates on which, and places where, public events were held
- Details of any additional consultation or notification required by the Council
- Details of any additional steps taken by the applicant to consult with members of the public
- A list of bodies, groups and organisations who were consulted by the applicant
- Copies of any materials sent to consultees
- Copies of any materials provided to those attending a public event
- Copies of any visual presentation shown or displayed at a public event
- Photographs of any display boards or models at public events
- Confirmation that consultees and attendees at public events were advised that pre-application consultation does not remove the right or the potential need to comment on the final application once it is made to the planning authority
- A summary of the written responses to consultations and views raised at public events
- An indication of the number of written responses received and the number of persons who attended the public events
- An explanation of how the applicant took account of views raised during the pre-application consultation process, and
- An explanation of how members of the public were given feedback on the applicant's consideration of the views raised during the pre-application consultation process

This report fulfils those requirements.

Tools used during the engagement process:

- 👍 Royal Mail letters to local residents
- 👍 Freephone number answered by the project team during office hours, and an event hotline for events;
- 👍 Freepost and project email address;
- 👍 Project website with all the details of the scheme;
- 👍 A survey on the website for people to share their view about the project;
- 👍 Two drop-in consultation events;
- 👍 One online engagement event.
- 👍 A record of these events;
- 👍 All times and dates of events chosen to encourage the maximum number of participants, and avoiding locally observed religious or cultural festivals;
- 👍 Newspaper public notice to promote the consultation;
- 👍 Proper GDPR control
- 👍 An approach that gives equal access to all residents and allows all to take part.
- 👍 Channels of engagement that remain open beyond the consultation period.

## Timeline

14 November 2023	Meeting with Invergarry Community Council
15 November 2023	Meeting with Fort Augustus Community Council
15 November 2023	Meeting with Glengarry Forest Trust
13 March 2025	Invitation letters about drop in events sent to local community. Online platform goes live.
17 March 2025	Public notice in the Press and Journal Inverness.
24 March 2025	First drop in consultation event in Invermoriston.
25 March 2025	Second drop in consultation event in Invergarry.
17 April 2025	Invitation letters about online Community UK event sent to local community.
29 April 2025	Online communityUK event.
April 2025 onwards	Ongoing engagement with stakeholders.
July 2025	Submission of the application

The next page gives an overview of the communityUK platform.

**CommunityUK** is all about accessibility. The platform offers consultation events for residents, bringing engagement to a platform they access regularly, at times that suits busy people, and with the convenience to ensure even the silent majority can take part.

The online events of communityUK are on both the website and on YouTube, and residents can choose to register or not, gaining equal access to the panel.

Submitting questions to the panel of architects, planners, the developer and other team members is easy, via text, freephone and even by submitting their own video. There's an event hotline, staffed throughout, to assist anyone who needs help.

The live events are broadcast-quality. The panel member speaking is nearly always visible for people to lip-read to improve understanding. Captions show both names of panel members and questions being asked. Recorded event videos have subtitles, and the ability to jump to relevant sections.

The system doesn't use Zoom or Teams – so people don't have to download complicated software. But they can use their smartTV, phone or tablet to watch and ask questions.

These days, councils are increasingly expecting citizens to be online – from rubbish collection to council tax. That's great for young people, working people and those early in retirement, who can intuitively use the communityUK system, bringing down barriers to participation among these mass audiences who have near universal access to the internet.

Even among more elderly people in their late seventies and eighties, the use of the internet and YouTube is very high – the majority now have a smart phone. The most important point is that, through the phone or freepost, if anyone needs help, they get it. If anyone wants to speak to the team, they can. If anyone wants to have a meeting, this is enabled.

CommunityUK encourages and enables residents to share their views in an interactive and meaningful manner that helps influence decisions and creates trust. With communityUK consultation more accessible than other mass-engagement events, it's the engagement platform of choice for residents.

### 3. Consultation Responses

#### Share Your View survey responses

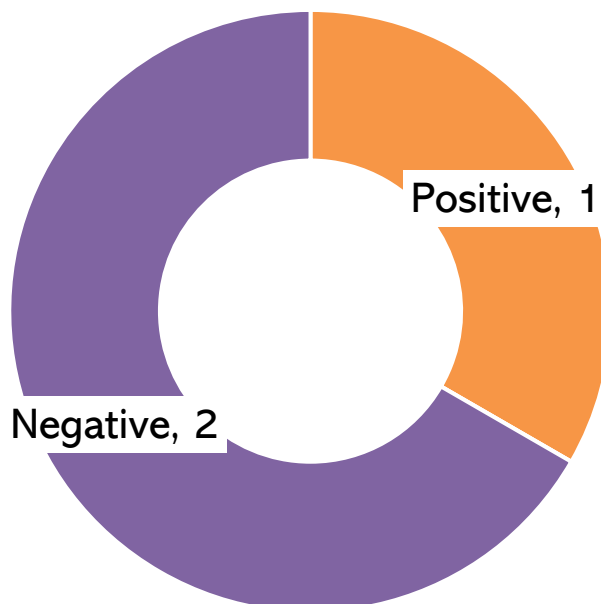
We had three responses to the 'share your view survey' online and at the events. This survey is now closed.

Respondents were asked to self-identify themselves. They were told that they could select more than one option:

All identified themselves as local residents.

In addition, one said they represented a local organisation, the Glengarry Community Woodlands and Development Trust.

Respondents were asked how they felt about the proposals. Of the three, 1 was positive, and 2 were negative.



Respondents were asked to give comments about the scheme. The full verbatim comments are:

I am concerned as a resident very close to this proposed development. We have a large number of huge infrastructure projects locally. Too much. Also I am aware that grid capacity further south is becoming an issue. When is enough sufficient. Also as a resident very near the proposed extension I am concerned about noise and visual intrusion in the landscape from even more and bigger turbines. Already we have the intrusive sound from the existing turbines. The extension proposed turbines even closer to our home. As Chair of the local Development Trust, I am concerned about too much Development in the area for which we do not have adequate infrastructure. Development in general is good, but must be proportional to the needs of the existing community.

I'm in favor of as many turbines that the hill can take. as long as the contribution continue to rise to the households electricity bills currently set at £350 will this go up by a third as there will be nearly a third more turbines going up. :) cheers sorry I am unable to attend the day as am on nightshift.

We talking about over 150m turbines that require red navigation lights at night? Currently in the glen we are spared damage to our dark skies

## Email

No residents emailed our dedicated email address.

## 4. Our response and continued consultation

The consultation and engagement exercise was useful in helping to gain trust from residents, and knowledge about the community and what they want for us. We want to thank all those who took part.

### **Feeding-back to participants and the wider community, and opportunities for continuing involvement**

One of the main objectives of this Statement of Community Involvement is to help record individual and collective responses to the proposals and how these responses have affected our proposals.

This report also allows us to feed back this information, in a more readily digestible form to the local community, respondents, other stakeholders and councillors.

This Statement of Community Involvement will be made available, alongside other planning documents, as part of the planning submission to the planning authority.

We remain committed to keeping in touch with local groups, individuals and all those that have participated throughout this consultation exercise. The team will be available to meet consultees again as appropriate.

This Pre-application Consultation Statement fully demonstrates the applicant's commitment to thorough and meaningful public consultation and meets the requirements set out by the relevant legislation. The submission of the planning application does not mark the end of this consultation and the team will continue to meet with local groups and individuals as appropriate throughout this process.

**Your Shout**  
**July 2025**

## Appendices

### **Appendix : Consultation Statement**

Appendix: Public consultation – first letter

Appendix: Public consultation – second letter

Appendix: Public consultation - press public notice

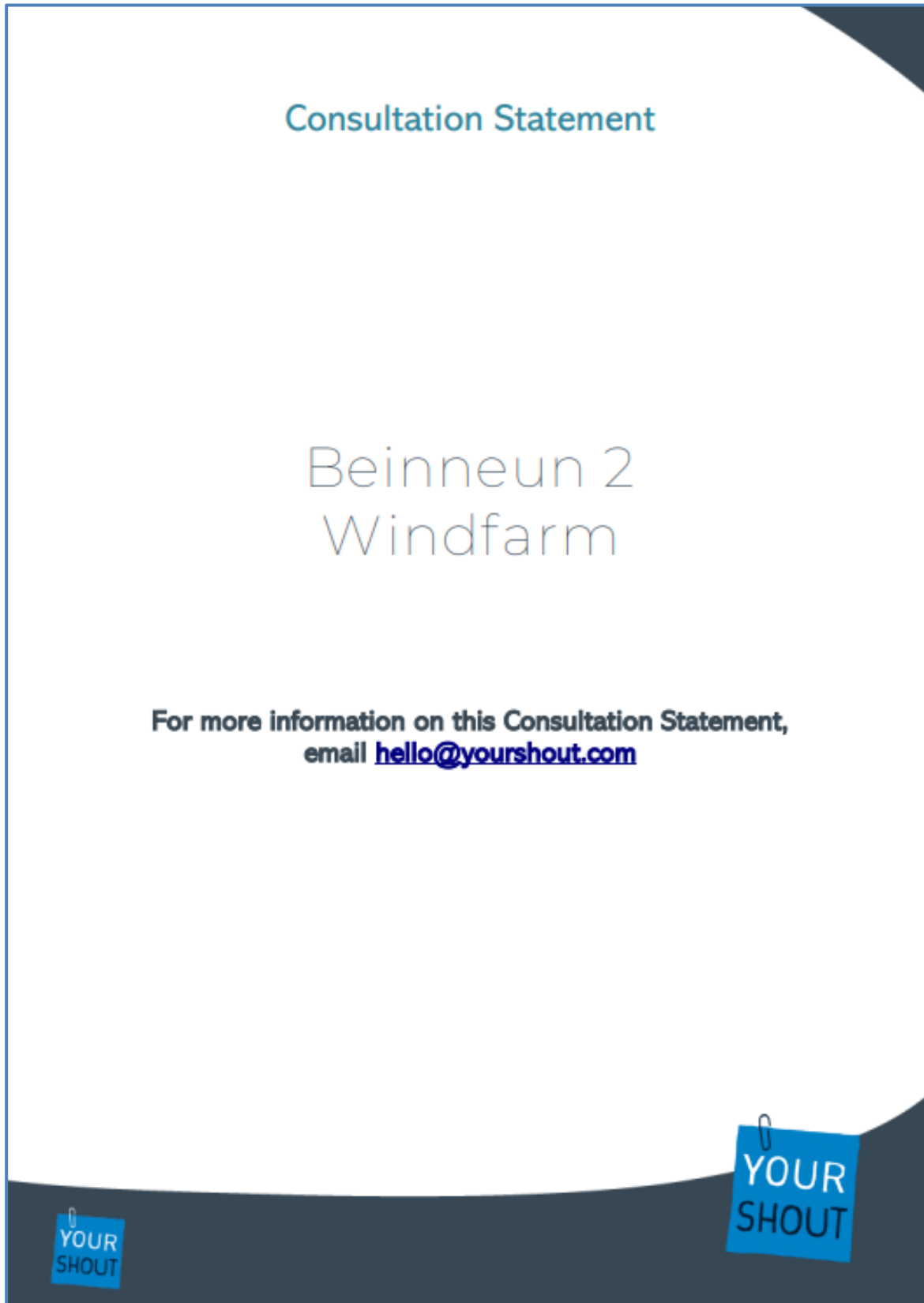
Appendix: Project website – screenshots

Appendix: Consultation events – example reminder email

Appendix: Drop-in consultation events – display boards

Appendix: Online consultation events - list of questions submitted

## Appendix : Consultation Statement



## 1. The policy and our process

**Our client is proposing the Beinneun 2 Windfarm, to be immediately south of the existing Beinneun Windfarm, northwest of Invergarry.**

This document is a Consultation Statement, and serves as an indication of the consultation that we propose to carry out in support of a future planning application for this project. This has been compiled by specialist community consultation group Your Shout, part of Thornccliffe.

Our application is a Section 36 application under the Electricity Act. However we are mirroring the spirit of the prescribed PAC process, even though we are not legally bound to follow this process.

Here is the PAC process, together with how we intend to carry out the consultation

- A minimum of two public events must be held for members of the public to make comments to the prospective applicant on their proposals before the proposal is finalised.

We are having two public events. One will be a drop-in event, probably at Glencarry community hall, between 2pm and 7pm on a weekday.

The other will be an online event, using a highly accessible consultation platform called communityUK – which is used by local authorities to conduct their consultation events. The event would be at 7pm on a weekday.

- Newspaper notice to be published in advance of the first and second event in a local newspaper circulating in the locality in which the proposed development is situated at least 7 days of this event

We will publish a notice in the Press and Journal.

Beinneun 2 Windfarm

- The information which the public can obtain requires to be available electronically as well as in physical format. The current list of content of a newspaper notice will require that prospective applicants to indicate how (including by electronic means) information can be obtained on the proposals.

We will have a website, possibly **beinneun.scot**, which contains information about the proposals and a feedback form.

There will be a project email address and 0800 freephone number.

We will have hard copies of the information available at the drop-in, and available to be sent by post to any resident that requests it.

- A minimum of 14 days between the first and final event needs to be considered.

It would be sensible to put the communityUK event 14 days prior to the drop-in event.

- The prospective applicant must at the final public event provide feedback to members of the public in respect of comments received by the prospective applicant as regards the proposed development

The team will be at the public consultation events.

- Provision of a website hosting all of the information which would be available to members of the public in an "in-person" engagement event

The website will be at **beinneun.scot**

- Provide electronic means of feedback on the proposed development

The website will include a feedback form

- Provision of telephone contact details where those who are unable to access the events in person or visit the website can find out more about the proposal and provide feedback

There will be a 0800 number to call during office hours.

#### Beinneun 2 Windfarm

- Undertake a letter drop to all properties within vicinity of the site to provide information on the proposed development, raise awareness of the virtual event, and provide an opportunity for feedback on the proposal. For the letter drop we recommend properties in the following proximities to:
- For Wind Farms - notify all properties within 10km of the site where there will be theoretical visibility of the wind farm
- Letters will be delivered by Royal Mail, to a radius area of just over 7.5 miles, or 12500 metres. This contains just 400 properties. The proposed area of distribution is shown below:



Here is the advertising requirements, together with what we intend to do

- A description of the proposed development
- Details as to where further information may be obtained concerning the proposed development
- The date and place of the public event
- A statement explaining how and by when persons wishing to make comments may do so
- A statement that comments made to the prospective applicant are not representations to the Council and if the prospective applicant submits a

Beinneun 2 Windfarm

planning application there will be an opportunity to make representations on that application to the Council

The advert will be placed in the Press and Journal.

Here are the reporting requirements, together with what we intend to do

- Report on consultation:
- Dates on which, and places where, public events were held
- Details of any additional consultation or notification required by the Council
- Details of any additional steps taken by the applicant to consult with members of the public
- A list of bodies, groups and organisations who were consulted by the applicant
- Copies of any materials sent to consultees
- Copies of any materials provided to those attending a public event
- Copies of any visual presentation shown or displayed at a public event
- Photographs of any display boards or models at public events
- Confirmation that consultees and attendees at public events were advised that pre-application consultation does not remove the right or the potential need to comment on the final application once it is made to the planning authority
- A summary of the written responses to consultations and views raised at public events
- An indication of the number of written responses received and the number of persons who attended the public events
- An explanation of how the applicant took account of views raised during the pre-application consultation process, and
- An explanation of how members of the public were given feedback on the applicant's consideration of the views raised during the pre-application consultation process

We will produce such a report.

Beinneun 2 Windfarm

The aims of the pre-application stage of public consultation are:

- To let local residents, businesses, councillors and other stakeholders know about the ideas for redevelopment on the site.
- To understand local views, engage with the community, help identify concerns and opportunities, and feed these into the evolving proposals.
- To show how we have responded to the issues of the community and stakeholders, and how changes have been made to the proposals.
- To pledge our continuing commitment to engagement throughout the statutory consultation period and beyond.
- We adhere to the Consultation Principles set out by successive governments through the Cabinet Office. Some of these principles are:
  - Using plain English and avoiding jargon. Making the whole process clear and concise.
  - Using the right tools, whether digital, collaborative, informative or ongoing. Only asking questions where we do not have a final view.
  - Ensuring the affected people, groups and businesses are aware, targeted, and allowed proper time to respond. Making sure each group can access and respond to the consultation, however and using whatever means they engage with us.
  - Early pre-application engagement and front-loading, where early engagement has significant potential to improve the efficiency and effectiveness of the process for all parties. We recognise that the more issues can be resolved at pre-application stage, the greater the benefits.
  - Analysing and responding objectively and properly to consultations, published in writing and online through this document, and by direct contact if possible. Responses will be published where possible, with due regard to GDPR regulations.

Beinneun 2 Windfarm

## 2. More about our consultation approach

**Our consultation process is above all accessible, participatory and transparent. It adheres to the council's consultation requirements and abides by best practice consultation.**

**We will be holding a drop-in public event at Glengarry community hall, as our second consultation event.**



**Our first consultation public event will be using the communityUK engagement portal, used by local authorities across the country to promote their own land, local planning authorities to undertake public consultation, and even imitated by regional bodies to undertake major public engagement.**

**CommunityUK** is all about accessibility. The platform offers consultation events for residents, bringing engagement to a platform they access regularly, at times that suits busy people, and with the convenience to ensure even the silent majority can take part.

The online events of communityUK are on both the website and on youtube, and residents can choose to register or not, gaining equal access to the panel.

Submitting questions to the panel of architects, planners, the developer and other team members is easy, via text, freephone and even by submitting their own video. There's an event hotline, staffed throughout, to assist anyone who needs help.

The live events are broadcast-quality. The panel member speaking is nearly always visible for people to lip-read to improve understanding. Captions show both names of panel members and questions being asked. Recorded event videos have subtitles, and the ability to jump to relevant sections.

The system doesn't use Zoom or Teams – so people don't have to download complicated software. But they can use their smartTV, phone or tablet to watch and ask questions.

These days, councils are increasingly expecting citizens to be online – from rubbish collection to council tax. That's great for young people, working people and those early in retirement, who can intuitively use the communityUK system, bringing down barriers to participation among these mass audiences who have near universal access to the internet.

Even among more elderly people in their late seventies and eighties, the use of the internet and YouTube is very high – the majority now have a smart phone. The most important point is that, through the phone or freepost, if anyone needs help, they get it. If anyone wants to speak to the team, they can. If anyone wants to have a meeting, this is enabled.

CommunityUK encourages and enables residents to share their views in an interactive and meaningful manner that helps influence decisions and creates trust. With communityUK consultation more accessible than other mass-engagement events, it's the engagement platform of choice for residents.

Beinneun 2 Windfarm


**Contact with councillors and community groups;**

We will inform the following local elected representatives to brief them on the proposals and alert them to the forthcoming consultation.

The site straddles two wards – Caol and Mallaig ward, and Aird and Loch Ness ward. All 7 ward councillors will be invited, along with any relevant portfolio members.

We will identify a range of affected community groups, businesses, and other key stakeholders, and produced a stakeholder matrix. All these individuals and groups will be invited to the public consultation events and offered either a one-to-one meeting or further information.

## Appendix: Public consultation – first invitation letter



# Proposals for an extension to Beinneun Wind Farm

## Public Consultation


March 2025

Dear resident,

We are delighted to be working with Beinneun 2 Ltd to consult on emerging proposals for an extension to the Beinneun Wind Farm, on a site approximately five kilometres northwest of Invergarry and directly adjacent to the existing Beinneun Wind Farm in the Highland Council area. As you may know, the wind farm presently has 34 turbines and we propose to install up to 19 new turbines in order to generate an additional 125MW approximately.

We are holding consultation events for residents to take part and find out more. The best way to take part is to register on our website. By registering for the consultation event you are most likely to attend, you will receive updates about that event. Our consultation events will be held on:

Monday 24 March 2.30pm to 6.30pm	Tuesday 25 March 2.30pm to 6.30pm
Glenmoriston Millennium Hall Invermoriston IV63 7YA	Glengarry Community Hall Invergarry PH35 4HG




Scan the QR code to take you to the website: [Beinneun2.site](https://Beinneun2.site)

From Friday 21 March you can also explore the proposal in more detail on the website, and share your view by 2 April, when the survey will close. If you need help – for instance if you have problems with internet access, please call us on 0800 955 1042 (lines open during office hours). You can also write to us at our Freepost address, which is at the bottom of this letter.

Yours faithfully,  
**Your Shout**  
FREEPOST RTXU-JGSR-KHLE, BWF, Your Shout, 007 China Works, SE1 7SJ

The full privacy and GDPR notice is on the website. If you give us your email and other data we, communityUK, will hold it and use it for event registration, survey and other purposes. You will be giving us your consent to process your data regarding this project. Please do not give us any personal data if you are aged under 16. You can unsubscribe from emails at any time. You can also withdraw your consent for us to use your data by emailing [privacy@communityUKlive](mailto:privacy@communityUKlive). You have a right to complain to the Information Commissioner's Office at any time if you feel there is a problem with the way we are handling your data



## Appendix: Public consultation – Second invitation letter

YOUR  
SHOUT

### Proposals for an extension to Beinneun Wind Farm **Public Consultation**

April 2025

Dear resident,

We are pleased to be working with Beinneun 2 Ltd on emerging proposals for an extension to the Beinneun Wind Farm. The site is approximately five kilometres northwest of Invergarry and directly adjacent to the existing Beinneun Wind Farm in the Highland Council area. As you may know, the wind farm presently has 34 turbines and we propose to install up to 19 new turbines in order to generate approximately an additional 125MW.

Following our two drop-in events last month, we are now holding an on-line event for residents to take part and find out more. The best way to take part is to register on our website. By registering for the consultation event, you will receive updates about the event. **Our consultation event will be held on:**

Tues 29 April,

Evening, 5pm

Using the communityUK platform



Scan the QR code to take you to the website **Beinneun2.site**

You can also explore the proposal on the website, and share your view by **9 May**, when the survey will close. Recordings of the event include a feature to turn on subtitles, and the event can also be watched on YouTube (this can be accessed via a link which will be made available on the project website.) Please submit your questions, including video questions, before or during the events for the project team to answer these live.

If you need help – for instance if you have problems with internet access, please call us on 0800 955 1042 (lines open during office hours). You can also write to us at our Freepost address, which is at the bottom of this letter.

Yours faithfully,

**Your Shout**

FREEPOST RTXU-JGSR-KHLE, Beinneun, Your Shout, 007 China Works, SE1 7SJ

communityUK

The full privacy and GDPR notice is on the website. If you give us your email and other data we, communityUK, will hold it and use it for event registration, survey and other purposes. You will be giving us your consent to process your data regarding this project. Please do not give us any personal data if you are aged under 16. You can unsubscribe from emails at any time. You can also withdraw your consent for us to use your data by emailing [privacy@communityUK.live](mailto:privacy@communityUK.live). You have a right to complain to the Information Commissioner's Office at any time if you feel there is a problem with the way we are handling your data

## Appendix: Public consultation – press public notice (advert)

**PUBLIC CONSULTATION ON THE  
PROPOSED EXTENSION TO THE  
BEINNEUN WIND FARM**

Beinneun 2 Ltd is conducting a public consultation on a proposal for an extension to the Beinneun Wind Farm, on a site approximately five kilometres northwest of Invergarry and directly adjacent to the existing Beinneun Wind Farm in the Highland Council area. The wind farm presently has 34 turbines and the proposal is to install up to 19 new turbines in order to generate approximately an additional 125MW.

Two public consultation events relating to the proposal will be held on:

**Monday 24 March 2.30pm to 6.30pm  
Glenmoriston Millennium Hall,  
INVERMORISTON IV63 7YA**

**and Tuesday 25 March 2.30pm to 6.30pm  
Glengarry Community Hall,  
INVERGARRY PH35 4HG**

To register your attendance at these events, please go to the website [beinneun2.site](http://beinneun2.site), email [beinneun2@yourshout.org](mailto:beinneun2@yourshout.org) or call our freephone number 0800 955 1042.


This event will provide information about the project and members of the project team will be available to answer questions. Attendees have the opportunity to provide feedback about the proposals on the website or at the events.

Hard copies of all material will be available at the events or calling the freephone helpline.

After this, we will hold a further consultation event.

PLEASE NOTE that comments submitted at this stage are not representations to the consenting authority and if the applicant submits an application there will be an opportunity to make representations on that application to the consenting authority. This public consultation is an opportunity to comment on our plans, which may alter before a formal application is made.

## Appendix: Project website – screenshots



**Beinneun 2** Homepage Watch it Share your View Explore Facebook Twitter YouTube


### Watch the consultation event recording

### Additional wind turbines at Beinneun Wind Farm

We are consulting on proposals to extend the Beinneun Wind Farm on a site approximately five kilometres northwest of Invergarry and directly adjacent to the existing Beinneun Wind Farm in the Highland Council area. We propose up to an additional 19 turbines of up to 200m in tip height, a Battery Energy Storage System and associated infrastructure to add to the 32 turbines on site. The new turbines will enable approximately an additional 125MW to be generated and fed into the grid.

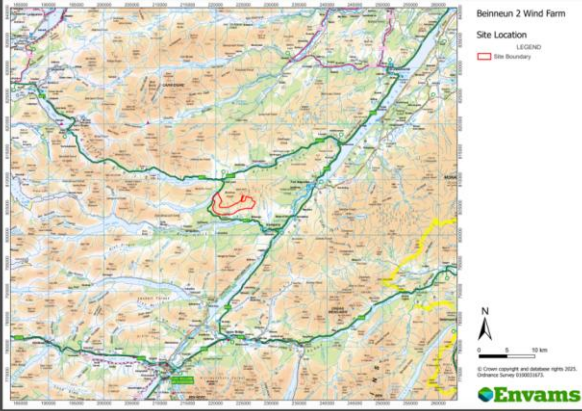
### Consultation record now online

We have held consultation events for residents to take part and find out more. You can now watch the recordings. You can also share your view until the deadline.



### Explore the proposal

Find out more about the proposals for the new turbines. Click the map



Beinneun 2 Wind Farm  
Site Location  
LEGEND  
Site Boundary

© Crown copyright and database rights 2021. Ordnance Survey 100040423

Envams

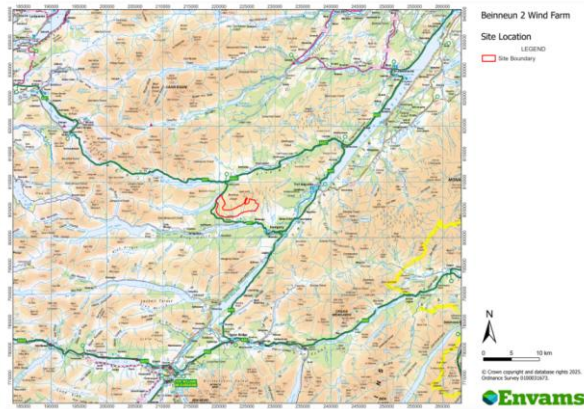
### Explore the proposal

On this page you can find out more about the proposal for new turbines.

Firstly, the map below shows the location of the wind farm - you can click to open the map.

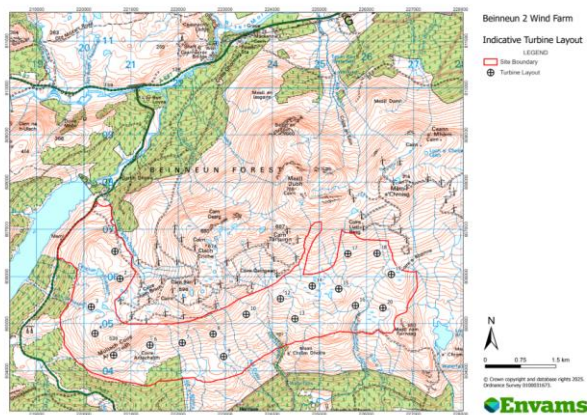
On this page you can find out more about the proposal for new turbines.

Firstly, the map below shows the location of the wind farm - you can click to open the map.



[Click to open](#)

Next, here is a map of where the new turbines can be located. Again, you can click to enlarge this further.



[Click to open](#)

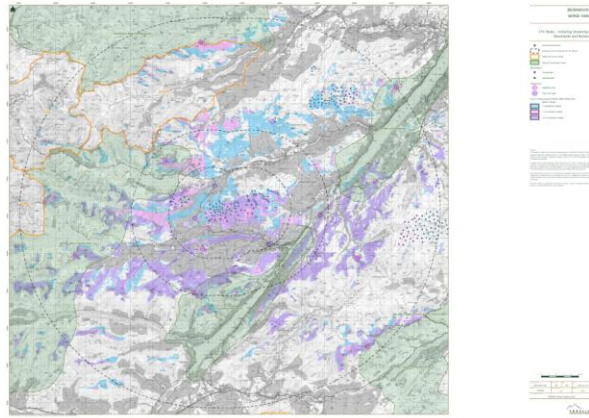
Next, you can see the visual material presented at the public exhibition.



[Click to open](#)

# Beinneun 2 Wind Farm Pre-application Consultation Statement

Finally, you can see an impact study.



Click to open

[Back to home page](#) [Share your views](#)

Share:    

[Contact us](#)

[Translate this website](#)

[The team](#)

## The team



Envams provides environmental advice, surveys and reports to achieve consent for large-scale ground-mounted solar, onshore wind, offshore wind and other types of renewable energy development.



Your Shout undertakes professional community consultation for the built environment. We work for developers, local authorities, and other clients who wish to contact, consult, and listen to people in a specific community, neighbourhood, or area. We are committed to strengthening relationships between landowners, communities, and local councillors.



communityUK is a consultation platform and tool for engaging communities on consultation projects, major or minor. Our platform helps deliver trust with the community, increase accessibility, generate excellent participation, and improve interactivity.



## Appendix: Consultation events – example reminder email

communityUK

Dear Vauxhall

Welcome to the consultation for Beinneun 2

We are holding online and drop-in consultation events for residents to take part.

The online event is today at 5pm

**You can take part in the online events on the following**  
<https://beinneun2.communityuk.site/registeredparticipant>

**The online event will last between 30 and 90 minutes**, depending on how many questions we receive.

We will also livestream this event on our [YouTube channel](#) - search for communityUK on youtube ([here's a handy guide](#)). Use the [text-only](#) page to send questions. Today's YouTube [link is here](#).

**After the event, we will place the recordings on the website.** Questions will be timestamped for ease of watching, and you'll be able to turn on auto-generated captions (subtitles).

**You can also share your views about the project.** [Click here](#) to share your views.

**We recommend you check your set up before the event starts.** We start the livestream 15 minutes before each event so you can test your set-up in advance.

**We hope you enjoy your experience of the communityUK platform.** If you want to rate your experience about the platform, [click here](#).

If you need any help, our event helpline is open 30 minutes before each event, on [0800 511 8225](tel:08005118225).

We stream live on our website via Vimeo. If you have problems viewing the video, you can use our [YouTube stream](#), or you may need to [update your browser](#).

## Appendix: Drop-in consultation events – display boards

# Beinneun 2 Wind Farm

## Welcome

Welcome to this exhibition for the proposed Beinneun 2 Wind Farm. This would appear as an extension of the existing Beinneun Wind Farm, and be made up of up to 19 turbines of a maximum of 200 m, generating up to approximately 125 MW.

In this exhibition we are presenting information on a wind farm which would be located around 5 km to the northwest of the centre of Invergarry and directly adjacent to the existing Beinneun Wind Farm. We would be grateful to receive any feedback with regard to the proposal, and environmental and human factors that could be affected by the scheme. This will be used to inform the ongoing design process.

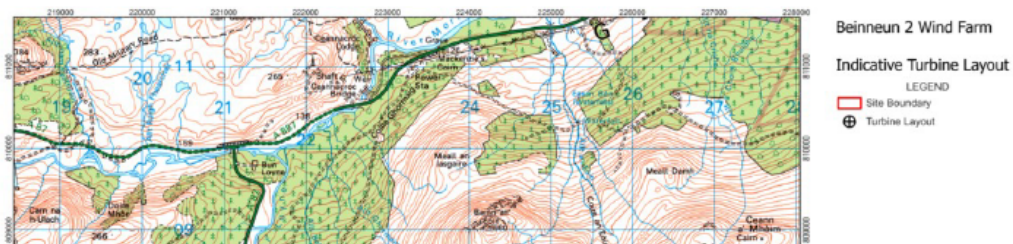
The application for planning permission for the scheme is expected to be submitted to the Energy Consents Unit in Summer 2025.

We hope you find the information provided useful. If you have feedback on this design or have any questions, you can contact the project team at any time (details below).

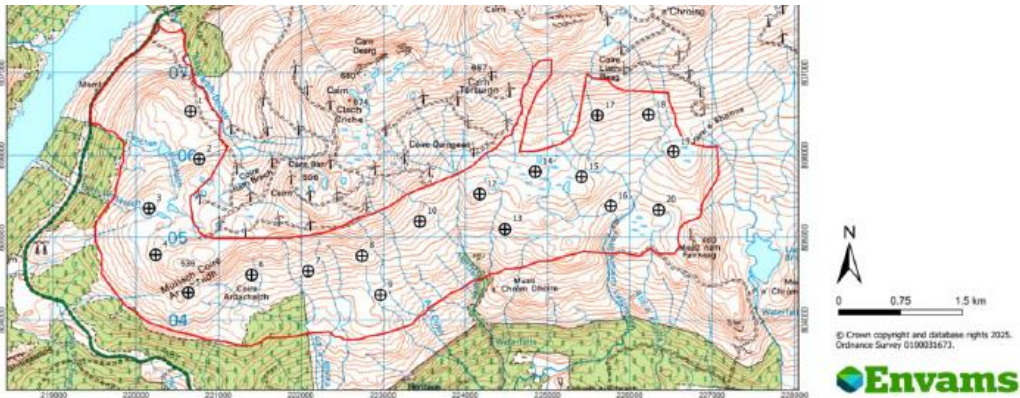
## Site Location

The current boundary for the scheme is outlined in red in the figure below.

Environmental surveys and assessments are currently ongoing and being finalised. These will inform the layout of the scheme within the boundary. We currently expect the main components to be located near to the road, at the bottom of the hill. The final layout will be set out in the planning application, which will be available to view on the Energy Consents Unit website after the application is submitted and validated.



# Beinneun 2 Wind Farm Pre-application Consultation Statement



## Contact Us

If you wish to discuss the proposal, have any feedback for us, or require any further information, please speak to one of the representatives of the developer, Beinneun 2 Ltd, at this event.

If you have comments outside this event, you can contact the agent Neal Reid by email to [neal@riversdale-enterprises.com](mailto:neal@riversdale-enterprises.com).

Information is also available on the project website at: <https://beinneun2.communityuk.site/> which can also be accessed by scanning the QR Code:



You can also share your view on the website. Hard copies of the information will be available at the drop-ins, and on request on our freephone number 0800 955 1042 (lines open during office hours). You can also write to us at our Freepost address below.

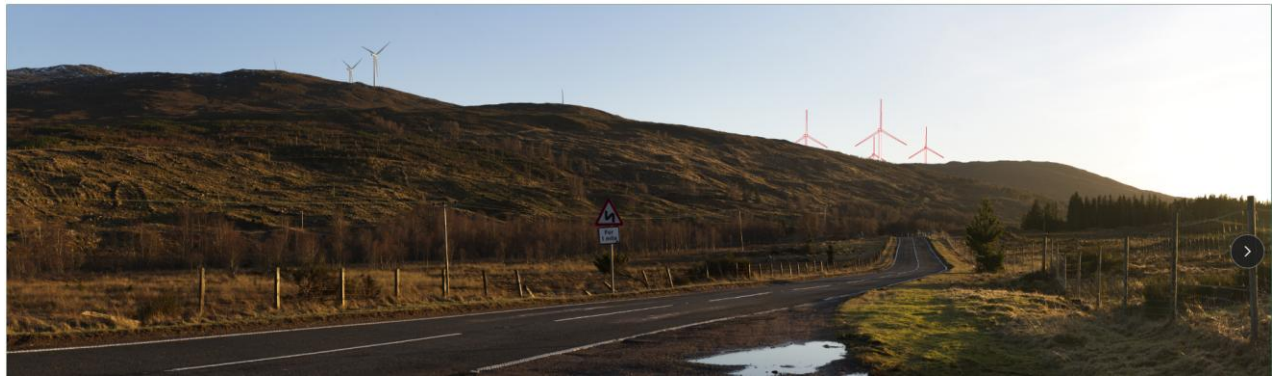
- FREEPOST RTXU-JGSR-KHLE, BWF, Your Shout, 007 China Works, SE1 7SJ

We would be grateful if comments could be submitted no later than the 1st of April 2025.

Please note that all comments should, at this stage, be sent to the developer at the contact details stated above and NOT to Highland Council. There will be an opportunity to make representations to the Council as and when a formal planning application for the proposal is submitted.

# Beinneun 2 Wind Farm

## Pre-application Consultation Statement

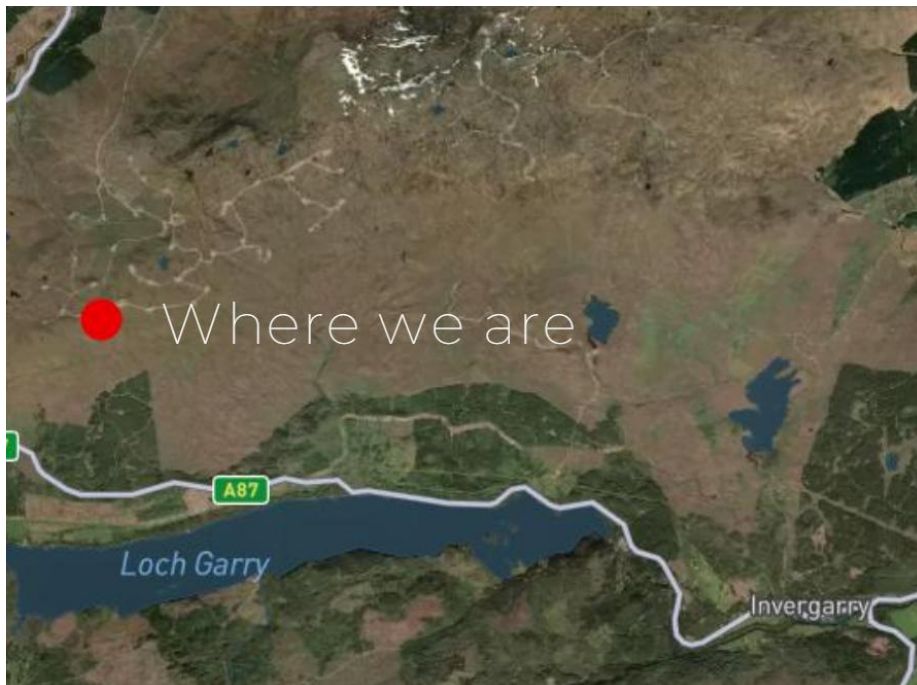


# Beinneun 2 Wind Farm

## Pre-application Consultation Statement

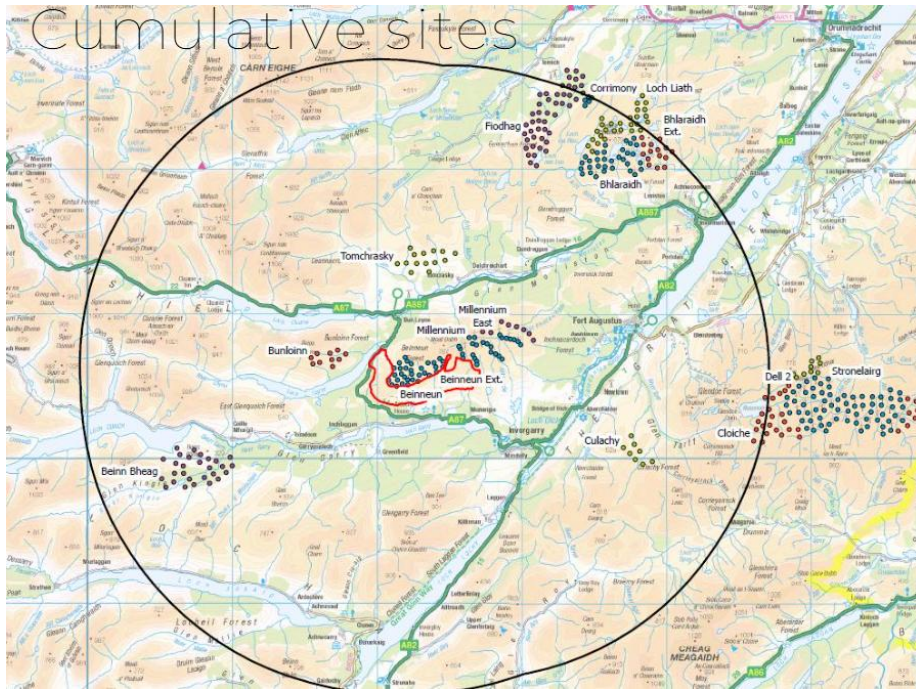


## Appendix: Online consultation events – presentation material





# Beinneun 2 Wind Farm Pre-application Consultation Statement



View from A87 west of site



View from A87 north of site



View from A87 south of site



**View from near Faichemard Farm**



## Benefits

- Addressing the growing demand for energy
- Generating an additional 125MW to feed to the grid
- Battery energy storage system will cope with peak demand
- An environmental survey will inform the final layout

## Appendix: Online consultation events - list of questions submitted

Question on timescale
Question on map of the wind farm
Question on peat survey
Question on too much development
Question on grid connection
Question on existing turbines
Question on battery storage design
Question on noise impact
Question on height of the new turbines
Question on household electric payments
Question on fuel price subsidy

# Your Shout

007 China Works  
Black Prince Road  
London  
SE1 7SJ



0800 955 1042

[hello@yourshout.com](mailto:hello@yourshout.com)

Your Shout is part of  
Thornccliffe Communications Ltd

